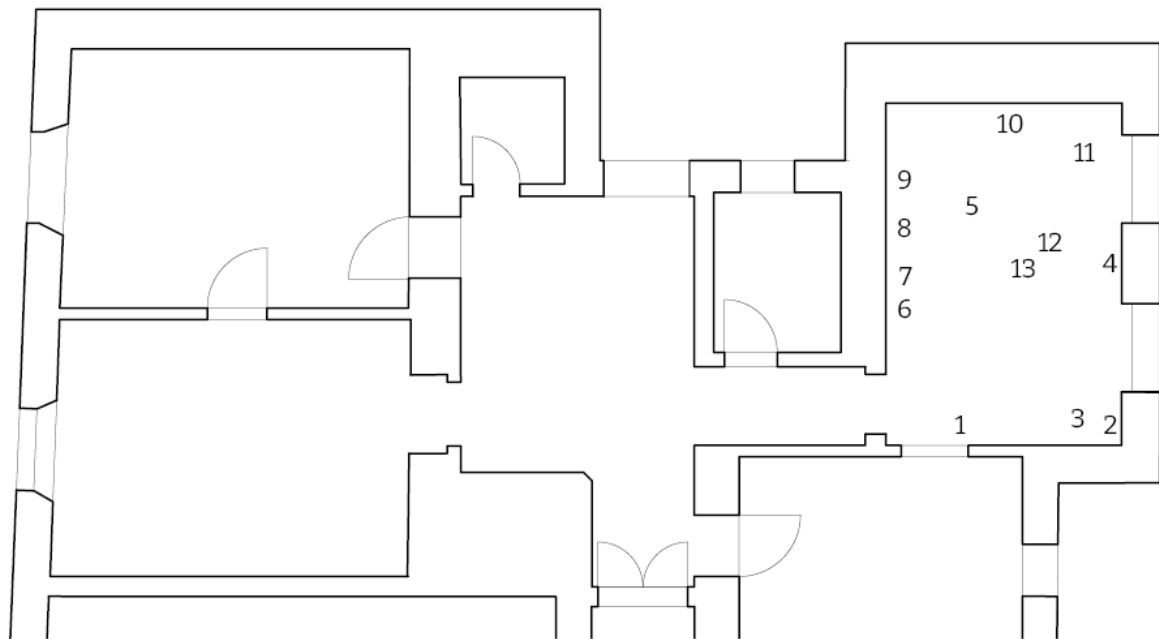


LISA DEIKUN  
**CHAPTER 1 EXHIBITION**

Exhibition: 15.01 - 07.03.2025



1.



Wound, 2024  
stoneware, glaze, glass  
ca. 13x11x14 cm

2.



Chain Vessel I, 2024  
earthenware, pigments, glaze  
ca. 25x16x40 cm

3.



Liquid Sword, 2024  
stoneware, glaze  
ca. 23x14, 30x14 cm

4.



Asemic Orchid, 2024  
stoneware, glaze  
ca. 30x26 cm

5.



Chimera III: Egg, 2024  
stoneware, glaze, glass  
ca. 23x17x14 cm

6.



Chimera IV, 2024  
stoneware, glaze  
ca. 22x25x10 cm

7.



Arrowhead, 2024  
earthenware, glaze, glass  
ca. 25x11 cm

8.



Chimera V, 2024  
earthenware, glaze  
ca. 22x25x10 cm

9.



Chimera I: Moth, 2024  
earthenware, glaze, glass  
ca. 17x23 cm

10.



Chimera II: Horns&Stitches, 2024  
earthenware, glaze, wool yarn  
ca. 19x25 cm

11.



Chain Vessel II, 2024  
earthenware, glaze  
ca. 18x10x25 cm

12.



Chain Vessel III: Glass Lake, 2024  
stoneware, pigments, glaze, glass  
ca.15x13x23 cm

13.



Don't drink, you'll turn into a little calf, 2024  
stoneware, earthenware, glaze, glass  
ca. 20x15x16 cm